

Speed Controller With One-touch Fittings

Series AS (In-line Type)



◆ Model

Model	Applicable tubing O.D.						Applicable cylinder bore size(mm)
	Metric size						
	3.2	4	6	8	10	12	
AS1001F	●	●	●				6, 10, 16, 20
AS2001F		●	●				20, 25, 32
AS2051F			●	●			20, 25, 32, 40
AS3001F			●	●	●	●	40, 50, 63
AS4001F					●	●	63, 80, 100

Note: ●Marking is electroless nickel plated, provided as standard.(N specifications)

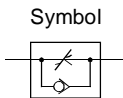
◆ Specification

Fluid	Air
Proof pressure	1.5 MPa
Max.operating pressure	1 MPa
Min.operating pressure	0.1 MPa
Ambient and fluid temperature	-5~60℃(No freezing)
Number of needle rotations	10 turns(8 turns ⁽¹⁾)
Applicable tubing material ⁽²⁾	Nylon, Soft nylon, Polyurethane
Option	Hexagonal lock nut, Electroless nickel plated ⁽³⁾

Note 1): In the case of AS1001F

Note 2): Use caution regarding the max.operating pressure when soft nylon or polyurethane tubing is used.

Note 3): Brass parts are all electroless nickel plated.



Symbol

Flow Direction Symbols on Body

Symbol



Symbol



◆ How to Order

AS 400 1F - 12 K

Option*

Nil	None	K	Hexagonal lock nut	N	Electoless nickel plated
-----	------	---	--------------------	---	--------------------------

* If more than one option is required, write option part numbers in the order of "K", "N".

Applicable tubing O.D.

Metric size

23	Φ3.2*	04	Φ4	06	Φ6	08	Φ8	10	Φ10	12	Φ12
----	-------	----	----	----	----	----	----	----	-----	----	-----

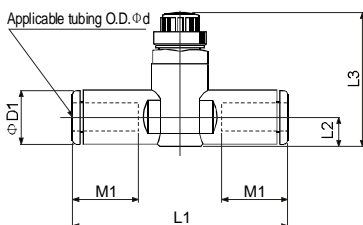
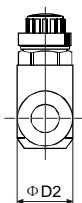
* Use Φ 1/8" tube.

With One-touch fittings

Body size

100	M5 standard	200	1/8 standard	205	1/4 standard
300	3/8 standard	400	1/2 standard		

◆ In-line Type



Model	Applicable tubing O.D. Φ d	D1	D2	L1	L2	L3		M1	Weight (g)
						Max.	Min.		
AS1001F-23	3.2	8.4	10	38.0	4.5	23.5	20.7	12.7	6
AS1001F-04	4	9.3	10	39.2	5.2	24.2	21.4	12.7	7
AS1001F-06	6	11.6	10	40.7	6.2	25.2	22.4	13.5	8
AS2001F-04	4	9.3	11.8	40.7	5.2	32.6	27.6	12.7	12
AS2001F-06	6	11.6	11.8	44.8	6.3	33.7	28.7	13.5	13
AS2051F-06	6	12.8	14.8	53.2	6.7	35.2	30.2	17	26
AS2051F-08	8	15.2	14.8	59.8	8.1	36.5	31.5	18	31
AS3001F-06	6	12.8	19.8	59	7.4	38.3	33.3	17	18
AS3001F-08	8	15.2	19.8	64.4	8.2	39.1	34.1	18	21
AS3001F-10	10	18.5	19.8	71.6	9.8	40.6	35.6	21	32
AS3001F-12	12	20.9	19.8	76	11	41.8	36.8	22	33
AS4001F-10	10	18.5	26.5	82	11.3	51.1	43.6	21	36
AS4001F-12	12	20.9	26.5	82	11.3	52.1	44.6	22	40