

Standard Cylinder

Double Acting, Single Rod / Double Rod

Series SU, SUD, SUJ

◆ How to Order

SU 50 50 25 S LB

Mounting style

SU Series

Nil	LB	FA	FB	CA
CB	TC	TC-M		
Available only for $\Phi 40 \sim \Phi 100$				

SUD Series

Nil	LB	FA	TC	TC-M
Available only for $\Phi 40 \sim \Phi 100$				

SUJ Series

Nil	LB	FA	TC	TC-M
Available only for $\Phi 40 \sim \Phi 100$				

Magnet

Nil	Without magnet	S	Built-in magnet
-----	----------------	---	-----------------

Adjustable stroke (Only for SUJ Series)

25	50	75
----	----	----

Cylinder stroke

* Refer to "Standard stroke" .

Bore size (mm)

32	40	50	63	80	100
----	----	----	----	----	-----

Model

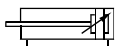
SU	Double acting, single rod	SUJ	Adjustable stroke type
SUD	Double rod type		



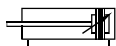
SU Series

Symbol

SU□-□



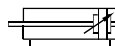
SU□-□-**S**



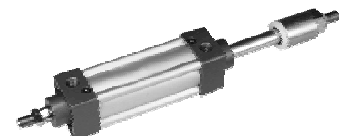
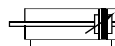
SUD Series

Symbol

SUD□-□



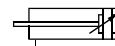
SUD□-□-**S**



SUJ Series

Symbol

SUJ□-□



SUJ□-□-**S**

