

5 Port Air Operated Valve

Body Ported

Series SYA3000, 5000, 7000



◆ How to Order

SYA **5** **1** 20 - **01**

Thread type

Nil	Rc	F	G	N	NPT
-----	----	---	---	---	-----

P, A, B port size

Symbol	Port size	Applicable series
M5	M5×0.8	SYA3000
01	1/8	SYA5000
02	1/4	SYA7000

Type of actuation

1	2	3
2 position single 	2 position double 	3 position closed center
4	5	
3 position exhaust center 	3 position pressure center 	

Series

3	SYA3000	5	SYA5000	7	SYA7000
----------	---------	----------	---------	----------	---------



◆ Specifications

Fluid	Air	
Operating pressure range	2 position single	0.15~0.7 MPa
	2 position double	0.1~0.7 MPa
	3 position	0.2~0.7 MPa
Pilot pressure range	2 position single	(0.7xP+0.1)~0.7P: Operating pressure range
	2 position double	0.1~0.7 MPa
	3 position	0.2~0.7 MPa
Ambient and fluid temperature	Max.60 °C	
Manual override(Manual operation)	Non-locking push type	
Lubrication	Not required	
Mounting orientation	Unrestricted	
Impact/Vibration resistance	150/30 (m/s ²)	

II

- VF
- SY
- SYJ
- 4V100
- 4V200
- 4V300
- 4V400
- VT307
- VP
- 3V
- 2W
- 2WH
- 2L
- 2V
- 2P
- VFA
- SYA**
- 4A100
- 4A200
- 4A300
- 3A100
- 3A200
- 3A300
- 3L
- 4L
- 4H
- SL,SH
- 4HV
- HV,K
- 3FM
- 3F
- 4F
- FV
- MSV
- MOV
- JM
- TAC
- HSV
- RE
- ASC
- KA
- ACV
- KS
- QE
- Manifold

5 Port Air Operated Valve

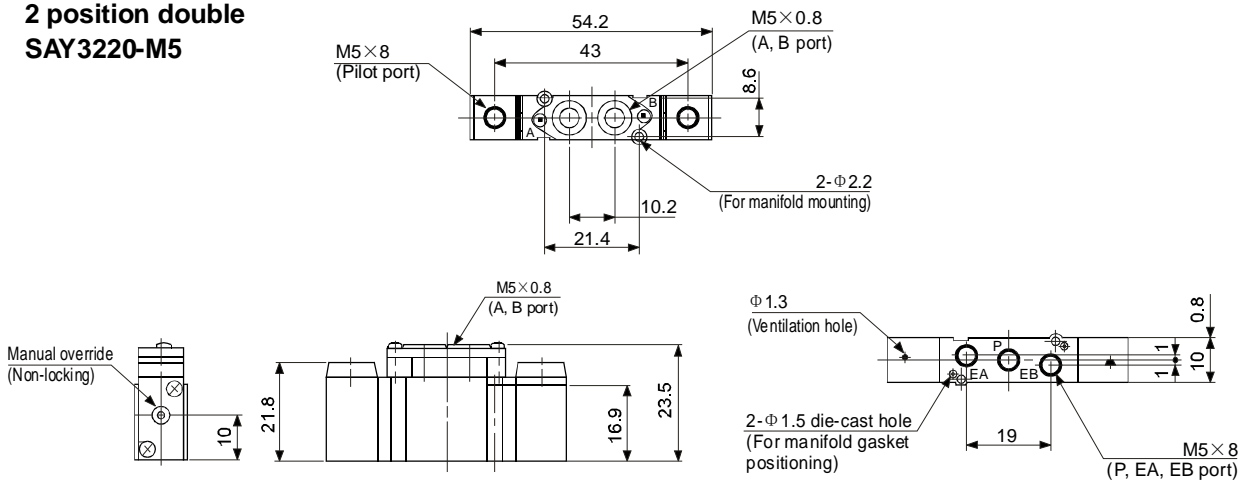
Body Ported

Series SYA3000, 5000, 7000

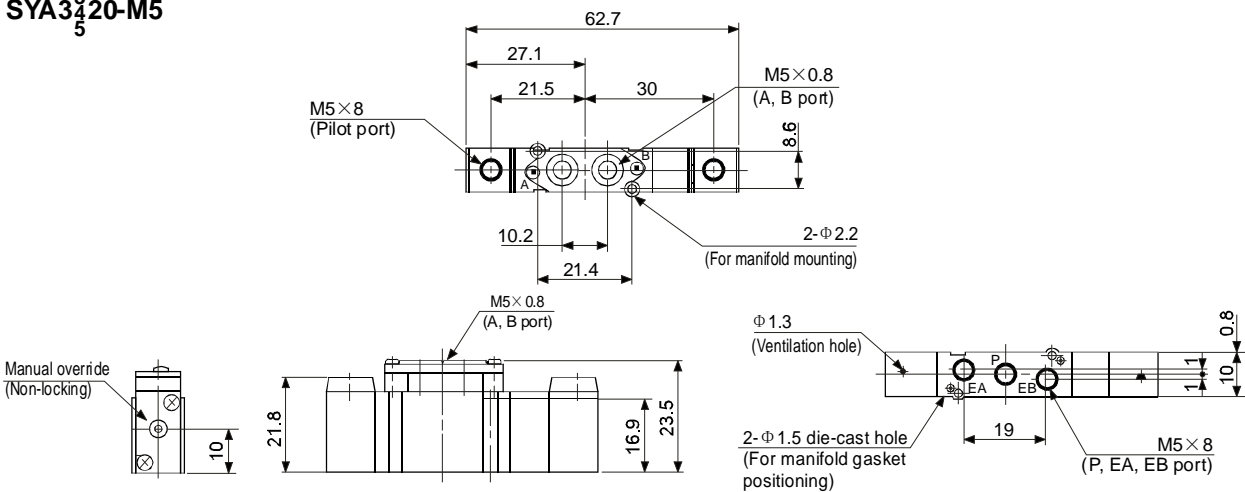


◆ Dimensions

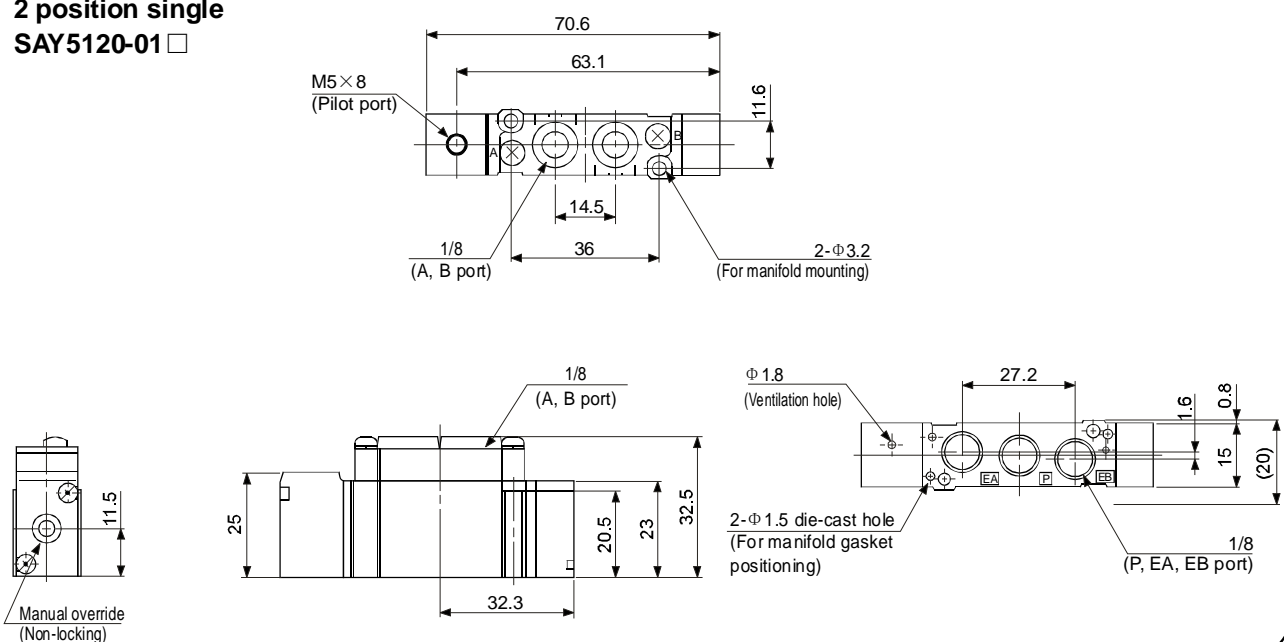
2 position double SAY3220-M5



3 position closed center/exhaust center/pressure center SYA3320-M5



2 position single SAY5120-01 □



II

VF
SY
SYJ
4V100
4V200
4V300
4V400
VT307
VP
3V
2W
2WH
2L
2V
2P
VFA
SYA
4A100
4A200
4A300
3A100
3A200
3A300
3L
4L
4H
SL,SH
4HV
HV,K
3FM
3F
4F
FV
MSV
MOV
JM
TAC
HSV
RE
ASC
KA
ACV
KS
QE
Manifold

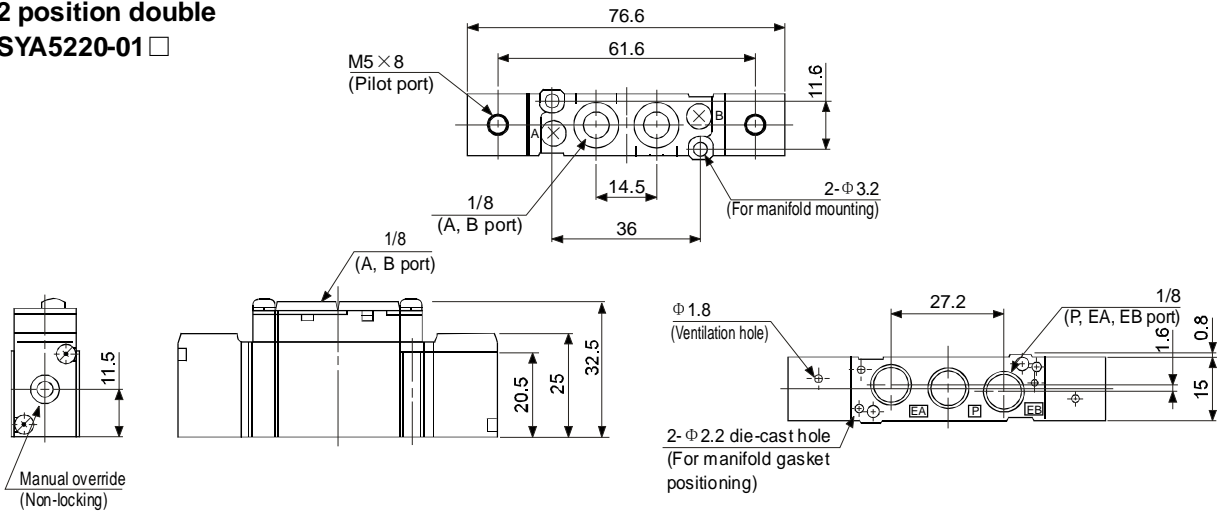
5 Port Air Operated Valve

Body Ported

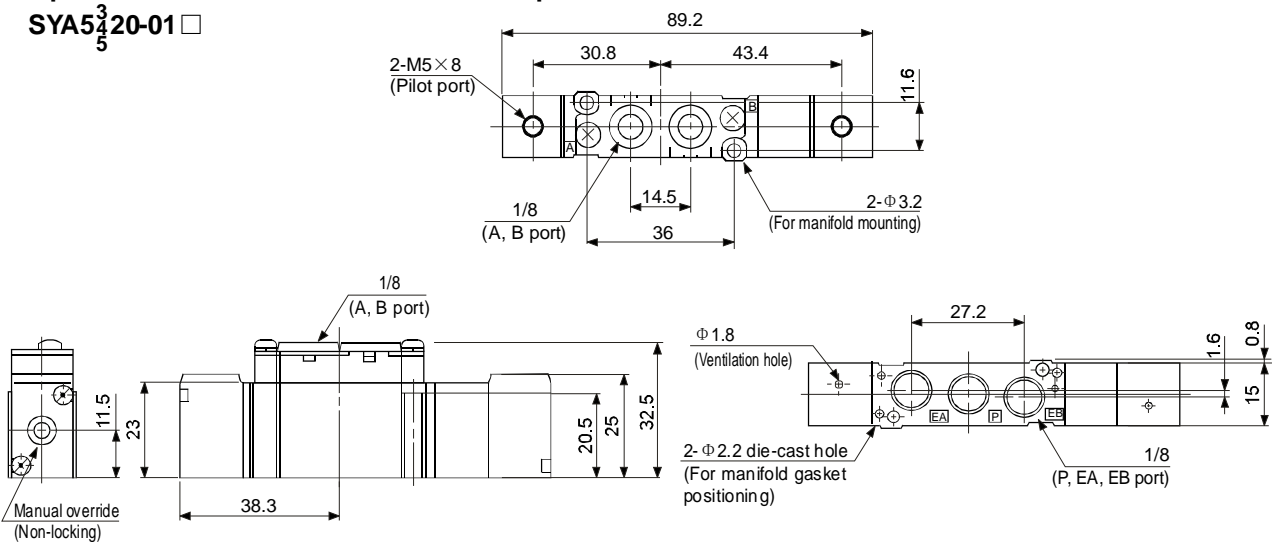
Series SYA3000, 5000, 7000

◆ Dimensions

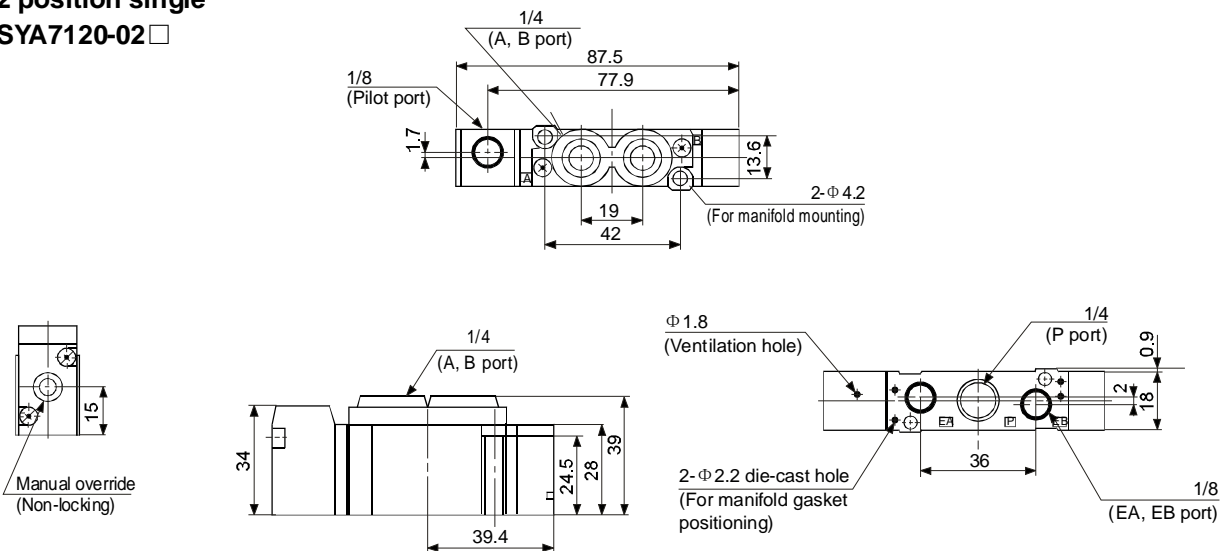
2 position double SYA5220-01 □



3 position closed center/exhaust center/pressure center SYA5420-01 □



2 position single SYA7120-02 □



5 Port Air Operated Valve

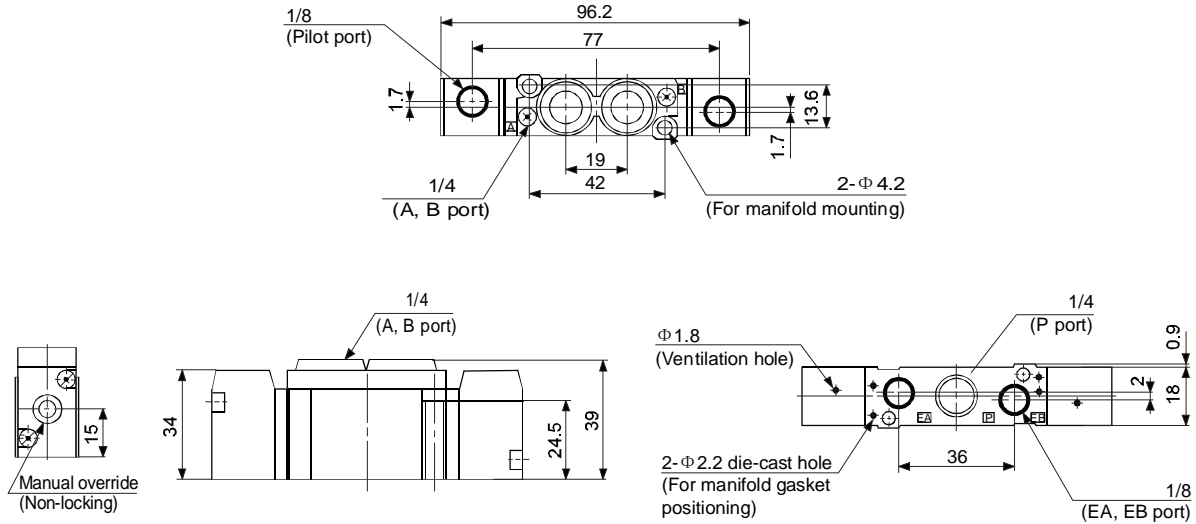
Body Ported

Series SYA3000, 5000, 7000

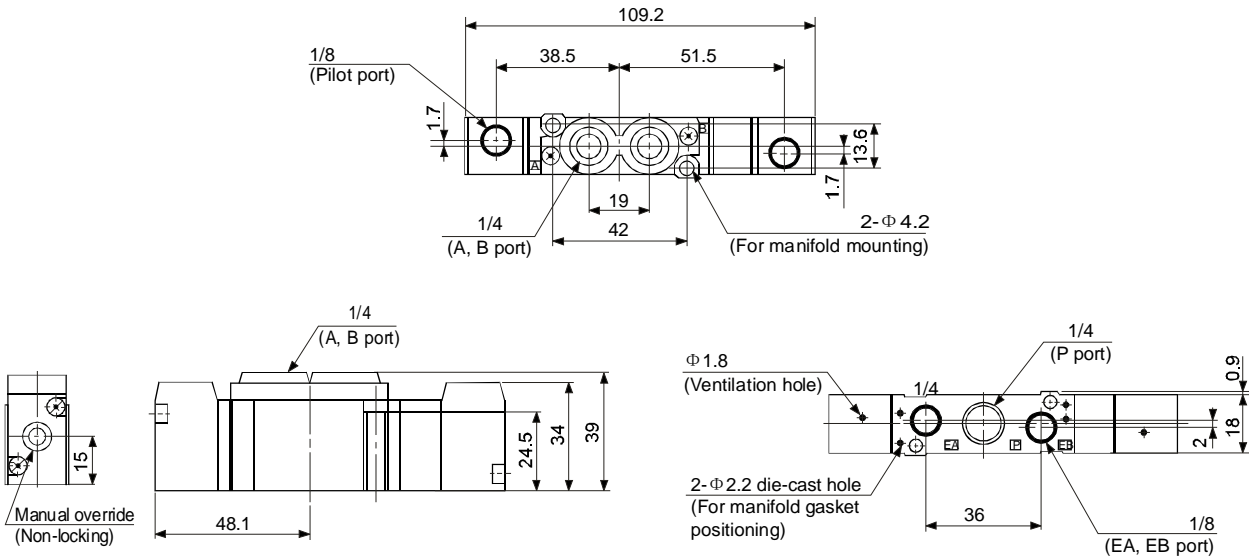


◆ Dimensions

2 position double SYA7220-02 □



3 position closed center/exhaust center/pressure center SYA7³₅20-02 □



II
VF
SY
SYJ
4V100
4V200
4V300
4V400
VT307
VP
3V
2W
2WH
2L
2V
2P
VFA
SYA
4A100
4A200
4A300
3A100
3A200
3A300
3L
4L
4H
SL,SH
4HV
HV,K
3FM
3F
4F
FV
MSV
MOV
JM
TAC
HSV
RE
ASC
KA
ACV
KS
QE
Manifold