

# 3 Port Solenoid Valve

Body Ported

## Series VT307



### ◆ How to Order

VT307 - **5** **G** - **01** **□** - **F**

#### Option

<b>F</b>	With foot bracket
----------	-------------------

#### Thread type

<b>Nil</b>	<b>Rc</b>	<b>F</b>	<b>G</b>	<b>N</b>	<b>NPT</b>
------------	-----------	----------	----------	----------	------------

#### Port size

<b>01</b>	1/8	<b>02</b>	1/4
-----------	-----	-----------	-----

#### Electrical entry

<b>G</b>	Grommet,300 mm lead wire	<b>H</b>	Grommet,600 mm lead wire
----------	--------------------------	----------	--------------------------

#### Rated voltage

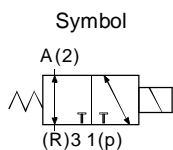
<b>3</b>	110VAC,50/60Hz	<b>5</b>	24VDC
<b>4</b>	220VAC,50/60Hz	<b>6</b>	12VDC

### ◆ Specifications



Type of actuation	Direct operated type 2 position single solenoid
Fluid	Air
Operating pressure range	0~0.9MPa
Ambient and fluid temperature	-10~50°C(No freezing)
Response time	20 ms or less (at the pressure of 0.5MPa)
Max. operating frequency	10Hz
Lubrication	Not required(Use turbine oil Class 1 ISO VG32, if lubricated.)
Manual override	Non-locking push type
Mounting orientation	Unrestricted
Shock/Vibration resistance	150/50 (m/s <sup>2</sup> )
Enclosure	Dustproof

### ◆ Solenoid Specifications

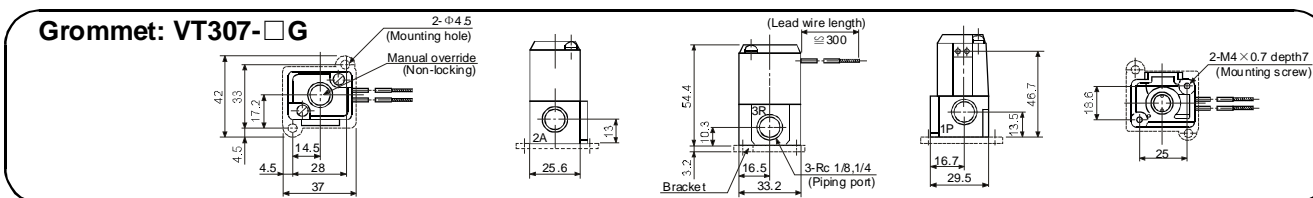


Electrical entry		Grommet	
Coil rated voltage(V)	AC(50/60Hz)	110,220	
	DC	24,12	
Allowable voltage fluctuation		-15~+10% of rated voltage	
Apparent power	AC	Inrush	12.7VA (50Hz) 10.7VA (60Hz)
		Holding	7.6VA (50Hz) 5.4VA (60Hz)
Power consumption	DC	Without indicator light:4.8W	

### ◆ Flow Characteristics/Weight

Valve model	Port size	Flow characteristics												Weight
		1→2(P→A)			2→3(A→R)			3→2(R→A)			2→1(A→P)			
		C[dm <sup>3</sup> /(sbar)]	b	Cv	C[dm <sup>3</sup> /(sbar)]	b	Cv	C[dm <sup>3</sup> /(sbar)]	b	Cv	C[dm <sup>3</sup> /(sbar)]	b	Cv	
VT307	1/8	0.71	0.35	0.18	0.68	0.27	0.17	0.65	0.36	0.17	0.63	0.35	0.17	Grommet

### ◆ Dimensions



II

VF
SY
SYJ
4V100
4V200
4V300
4V400
<b>VT307</b>
VP
3V
2W
2WH
2L
2V
2P
VFA
SYA
4A100
4A200
4A300
3A100
3A200
3A300
3L
4L
4H
SL,SH
4HV
HV,K
3FM
3F
4F
FV
MSV
MOV
JM
TAC
HSV
RE
ASC
KA
ACV
KS
QE
Manifold